



**REGENT'S**  
UNIVERSITY LONDON

English Language  
Centre



# English Language Courses

2020-21



An aerial photograph of London, showing the city skyline in the background with the Shard and other skyscrapers. In the foreground, there is a large green park area with trees and a few buildings, which is Regent's Park. The word "Welcome" is written in large, white, serif font across the middle of the image.

# Welcome

**to the English Language Centre at Regent's University London**

Regent's University London is a private university, with a highly cosmopolitan community, based in royal Regent's Park.

Set in the heart of the UK's vibrant capital, Regent's is a superb place in which to live and study, just minutes away from all that this world-class city has to offer.

We are a small, friendly University with around 140 different student nationalities on campus. Our English language students are able to mix with undergraduate and postgraduate students from around the world, and enjoy the same facilities that they do.

**[regents.ac.uk/elc](https://regents.ac.uk/elc)**

**Call us on +44 (0)20 7487 7477**



English language students enjoy a supportive, personal environment, with small class sizes and individual attention.

## COURSES

General English .....	12
Intensive English .....	12
Pre-sessional Course .....	13
General English plus IELTS .....	14
Intensive IELTS .....	15
IELTS Online .....	15
Summer English Plus .....	16
Winter English Plus .....	18
English Conversation Online .....	19
Private English Language Tuition .....	19
English Language Teacher Training .....	20

Apply all year round at [regents.ac.uk/elc](https://regents.ac.uk/elc)



■ London

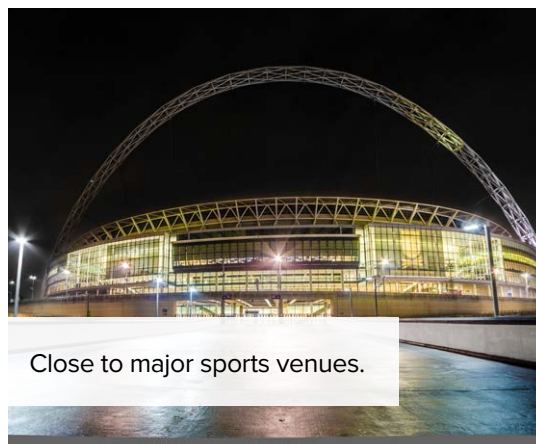
# In the heart of London

At Regent's, London is both your classroom and your playground. The city's culture, heritage and commerce form an essential part of your student experience.

Excellent transport links make it easy to get around. You will be within easy reach of all that this exciting European city has to offer.



Visit galleries and museums.



Close to major sports venues.

Easy access to the City of London.





*Studying in London gave me the opportunity to immerse myself in English culture, and as a result my English improved very quickly.*

Ambre Vochelet, France



Close to  
Baker Street  
station



Less than one hour's travel  
from most London airports

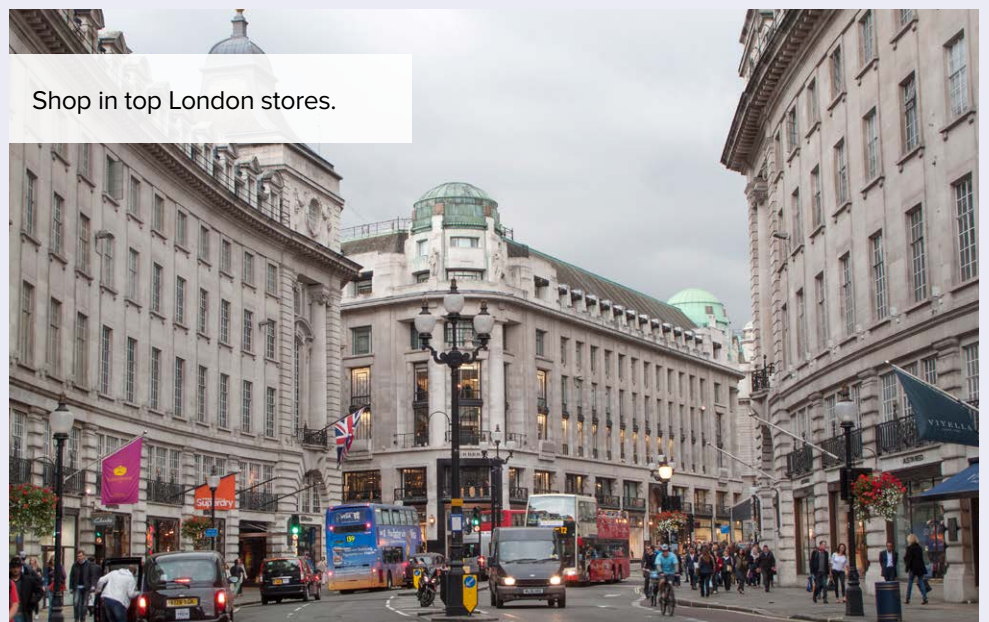
**10**

minutes by Underground  
from the Eurostar

Enjoy the sights and entertainment of London's West End.



Shop in top London stores.



**Apply all year round at [regents.ac.uk/elc](https://regents.ac.uk/elc)**





# Cosmopolitan campus

At Regent's you will be a part of one of the most cosmopolitan educational communities in the United Kingdom.

With classmates from all corners of the world, you will make international friends, learn about other cultures and build a global network of contacts for the future.

Mixing with 3,500 international students on campus, at Regent's you will never be just another face in the crowd.

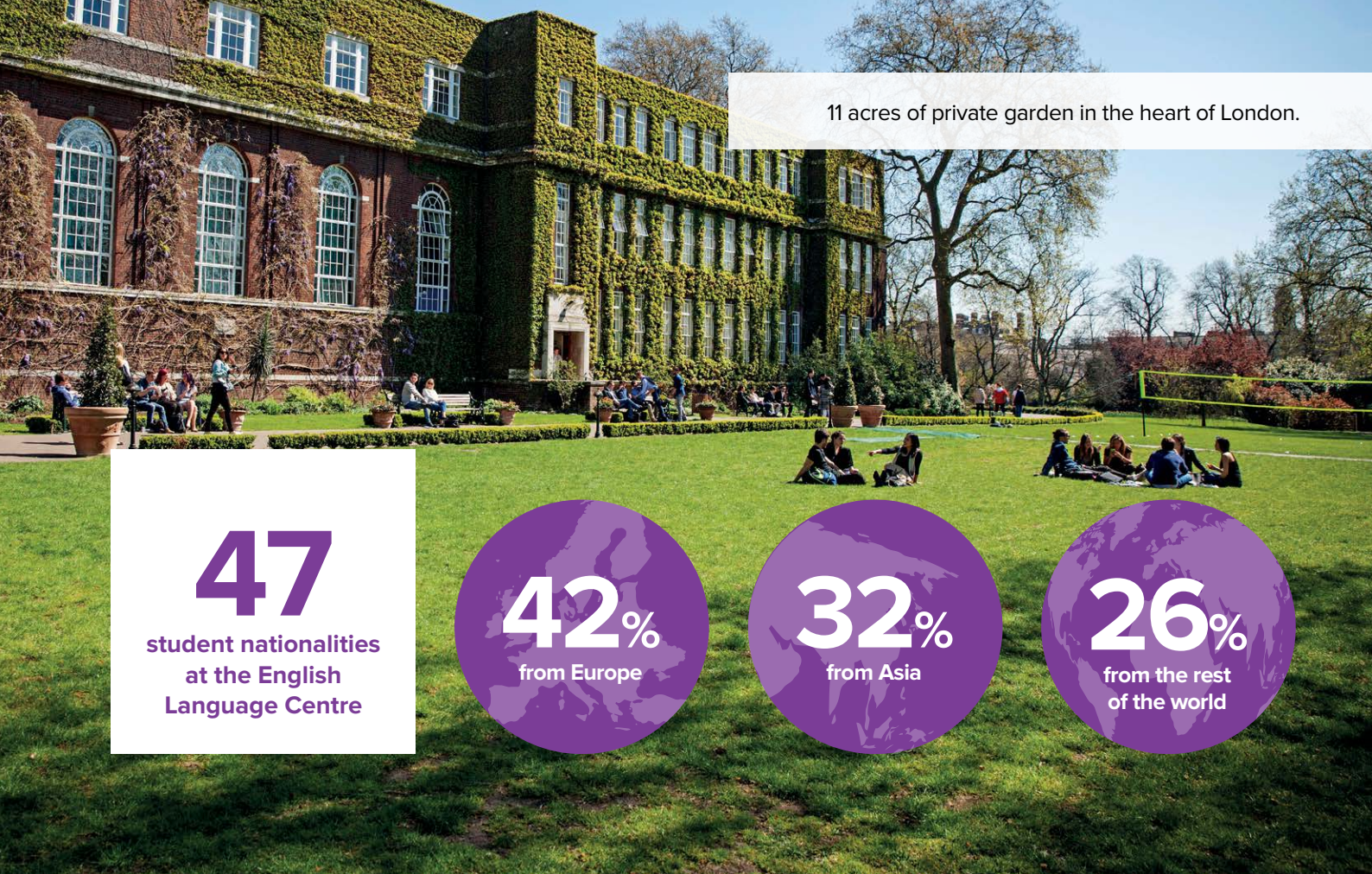


A short walk away from the campus is Marylebone Village, a lively historical area, known for its up-market boutiques, cafés and designer shops.



**Call us on +44 (0)20 7487 7477**





11 acres of private garden in the heart of London.

**47**

student nationalities  
at the English  
Language Centre

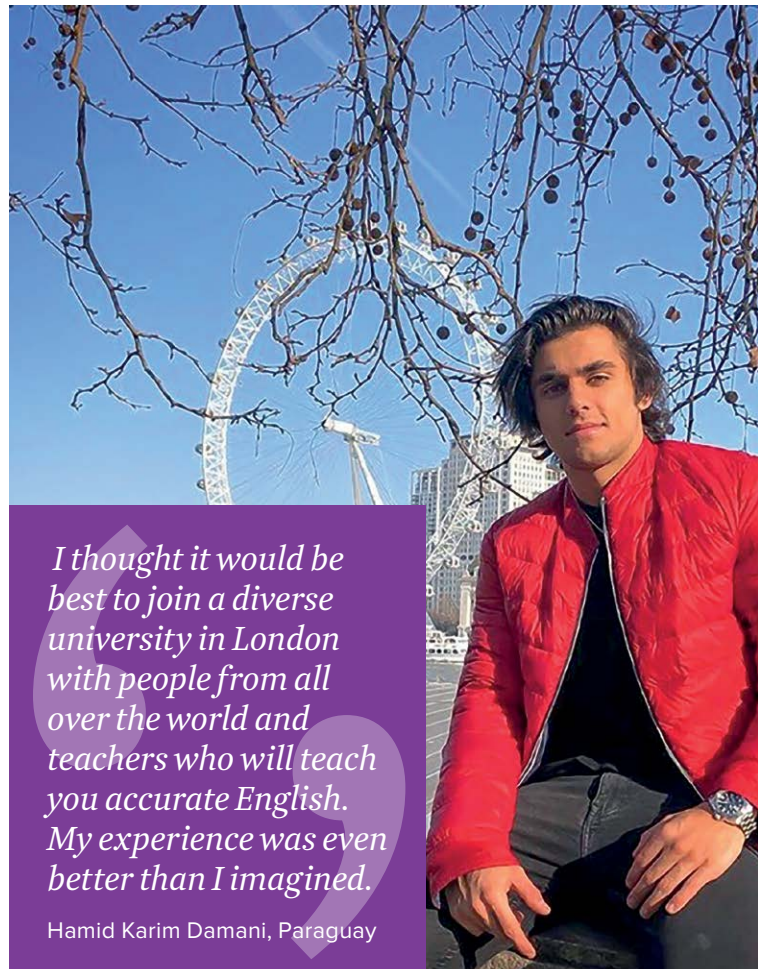
**42%**  
from Europe

**32%**  
from Asia

**26%**  
from the rest  
of the world



The Regent's campus is located in the beautiful, peaceful surroundings of a royal park.



*I thought it would be best to join a diverse university in London with people from all over the world and teachers who will teach you accurate English. My experience was even better than I imagined.*

Hamid Karim Damani, Paraguay

**Apply all year round at [regents.ac.uk/elc](https://regents.ac.uk/elc)**



## ■ Student life



# People and places

We want you to get the most out of every moment as a student at Regent's. You'll find plenty of opportunity to have fun and get involved.

You will be within easy reach of many top London locations, such as the National Gallery, Tate Britain, West End theatres and the British Museum.





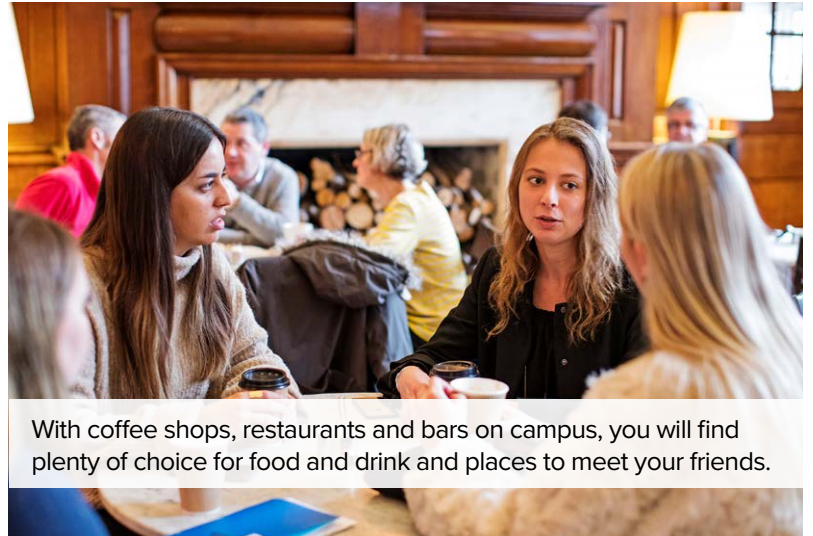


*Talking with my classmates from different countries, understanding different cultural histories and customs is really full of fun. My view of the world is expanded.*

Ying Jiang, China



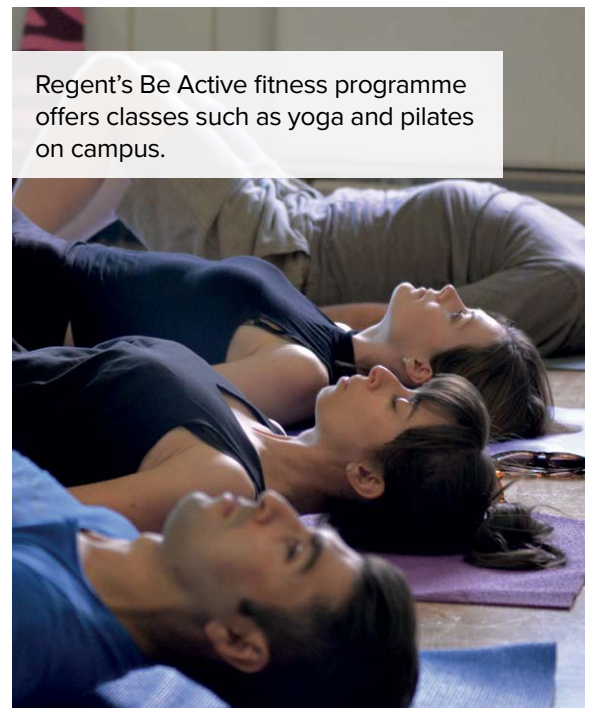
Enjoy a lively social life, with regular social events on campus.



With coffee shops, restaurants and bars on campus, you will find plenty of choice for food and drink and places to meet your friends.



Our sports teams include football, basketball, volleyball and polo.



Regent's Be Active fitness programme offers classes such as yoga and pilates on campus.

**Apply all year round at [regents.ac.uk/elc](https://regents.ac.uk/elc)**



## ■ Accommodation

# Somewhere to live

### On-campus accommodation

Reid Hall is located on our campus in Regent's Park overlooking the surrounding gardens. Living on campus allows you to relax and socialise, while being just moments away from the classroom and campus facilities. Single and shared rooms are available (twin or triple) with shared bathroom facilities.

#### Autumn 2020/Spring 2021

Reid Hall single room	£420 a week, food* included
Reid Hall twin room	£340 a week, food* included
Reid Hall triple room	£325 a week, food* included

\*Prices are per person, per week and include £90 of meal credit. This does not guarantee you three meals a day, seven days a week: you must budget to make it last. If it runs out you can add more credit or use cash.





## Homestay accommodation

Homestay enables you to experience a British way of life while you study. Private and homestay accommodation options are available throughout London, organised by experienced external providers. They are conveniently located, close to public transport and offer a high standard of accommodation. You can socialise and eat with your host(s), giving you the chance to practise your English outside the classroom. Hosts are selected for their friendliness and homes must meet British Council and English UK standards.

- Single furnished rooms with bed, desk, chair and wardrobe/storage space
- Shared bathroom facilities
- Access to the main living areas of the house such as the lounge and dining rooms
- Within normal commuting distance of central London (approximately 25-50 minutes each way off peak hours)
- Two weeks minimum stay
- Never more than 4 students sharing one home
- Continental breakfast and evening meal included

Standard single room Zone 2	£235.00 per week *
Standard single room Zone 3	£195.00 per week*
Standard single room Zone 4&5	£180.00 per week*

To be matched with the right host, please book well in advance. Let us know of any requirements (e.g. dietary/medical, whether you smoke, allergy to pets) by completing the off-campus accommodation request form.

\*Under 18s. For anyone aged under 18, a supplement of £15.00 per person per week is payable to cover for additional responsibility and DBS check. Under 18s may only be accommodated on half board basis (breakfast and dinner).



## Private homes

In private homes, students have more freedom compared to homestays and more than 4 students could be hosted at a time. For students aged 18+ only. A private home organised through Regent's has the following features:

- Single furnished rooms with bed, desk, chair and wardrobe/storage space
- Shared bathroom facilities
- Access to the main living areas of the house such as the lounge and dining rooms
- Within normal commuting distance of central London (approximately 25-50 minutes each way off peak hours)
- Two weeks minimum stay
- Continental breakfast only included. Evening kitchen facilities are not normally provided (except for tea and coffee making)

Standard single room Zone 2	£190.00 per week
Standard single room Zone 3	£170.00 per week
Standard single room Zone 4&5	£150.00 per week

- Self-catering. Includes full use of kitchen, as no meals are provided.

Standard single room Zone 2	£200.00 per week
Standard single room Zone 3	£175.00 per week
Standard single room Zone 4&5	£160.00 per week



### Terms and conditions

- A £250 deposit is required upon completing an accommodation request form, £50 of which is a non-refundable housing placement fee.
- Bookings cannot be cut short within the first four weeks of stay. Thereafter two weeks' notice will apply.
- Cancellation, postponement and curtailment of stay received less than two weeks prior to arrival, or no show, will incur a charge of two weeks.
- In addition, the following charges may apply:
  - £15 supplement per person per week for summer bookings (June, July and August).
  - £35 supplement per person for bookings over the Christmas period.
  - £15 supplement per person per week for special diets.
- Rates are valid until 31 December 2021, but are subject to change.





At Regent's, we believe in face-to-face education. You will benefit from high levels of personal attention and regular contact with your tutors.

# Personal attention





Our highly trained English language tutors will be there to help and guide your studies throughout your time at Regent's.

**15**

students maximum  
in a class



Working closely with other students from across the world, you will develop your English language skills and make friends from many different countries.

**Our teachers**  
have internationally  
recognised qualifications  
such as Cambridge  
CELTA, DELTA/DipTESOL

Accredited by the



**BRITISH  
COUNCIL**

for the teaching  
of English in the UK

**MEMBER**

**ENGLISH  
UK**

**Apply all year round at [regents.ac.uk/elc](https://regents.ac.uk/elc)**



## English Language Courses

# Courses

- Start dates every two weeks
- We will assess your English on the first day, to ensure that you are in a class with other students at the same level

### General English

**Monday - Friday 09:15-12:30  
(15 hours per week)**

This course is aimed at students who would like to improve their skills (reading, writing, listening and speaking) as well as vocabulary, grammar and pronunciation.

Duration	Fees per week
2-16 weeks	£300
17-24 weeks	£270
25+ weeks	£245

### Intensive English

**Monday - Thursday 09:15-12:30  
and 13:30-15:00  
Friday 09:15-12:30  
(21 hours per week)**

An intensive course combining General English in the mornings with English skills classes in the afternoons.

On Friday afternoons you can choose to have free time or participate in an extra-curricular activity.

Duration	Fees per week
2-16 weeks	£390
17-24 weeks	£360
25+ weeks	£325

#### Enrolment dates

##### 2020

14 September  
12 and 26 October  
9 and 23 November  
7 December

##### 2021

11 and 25 January  
8 and 22 February  
8 and 22 March  
6 and 19 April  
4 and 17 May  
1, 14 and 28 June  
12 and 26 July  
9 and 23 August  
6 September  
4 and 18 October  
1, 15 and 29 November  
6 December

#### English levels:

Pre-intermediate (A2) to Advanced (C1)

#### Course length:

A minimum of 2 weeks, depending on a student's individual needs and current level of English

Students complete monthly progress tests if their course is 4 weeks or longer.

Please contact us for advice on your current level of English, or see our website for more information.

**Call us on +44 (0)20 7487 7477**



All our classes have a maximum of 15 students

The minimum age for students wishing to join a course is 16 years old

Classes run from Monday to Friday

There is a 15-minute break during morning classes

Fees include:

- University induction
- English language lessons
- Access to the library and virtual learning environment
- Extra-curricular activities
- Student support services
- Course materials: coursebook\* and supplementary handouts
- Course certificate and monthly progress reports

\*One coursebook is included in the course fee. Students who move from one level to another will be required to purchase a new coursebook for £35 through Regent's online store.



*My course has really improved my English skills and has made me more confident to communicate in English, so I can participate in activities and social clubs outside of the university.*

Shunnosuke Yoshizawa, Japan

## Pre-sessional Course

**Monday - Thursday 09:15-12:30 and 13:30-15:00**  
**Friday 09:15-12.30**  
**(21 hours per week)**

This course is designed for students who currently hold an offer for a degree programme at Regent's University London, or any other UK based institution.

It provides an overview of academic culture in the UK, develops general and academic English and explores different types of academic assessment.

Upon successful completion of the course, students can progress directly to their chosen degree programme at Regent's, provided they have met the entry requirements.

Duration	Fees
44 weeks	£14,525
34 weeks	£11,275
24 weeks	£8,025
20 weeks	£6,910
16 weeks	£5,625
12 weeks	£4,295
10 weeks	£3,670
8 weeks	£3,020
4 weeks	£1,760

**Start dates leading to degree programmes beginning January 2021**

28 September 2020 (12 weeks)
12 October 2020 (10 weeks)
26 October 2020 (8 weeks)
23 November 2020 (4 weeks)

**Start dates leading to degree programmes beginning September 2021**

12 October 2020 (44 weeks)
11 January 2021 (34 weeks)
22 March 2021 (24 weeks)
19 April 2021 (20 weeks)
17 May 2021 (16 weeks)
14 June 2021 (12 weeks)
28 June 2021 (10 weeks)
12 July 2021 (8 weeks)
9 August 2021 (4 weeks)

**Start dates leading to degree programmes beginning January 2022**

8 February 2021 (44 weeks)
19 April 2021 (34 weeks)
28 June 2021 (24 weeks)
26 July 2021 (20 weeks)
23 August 2021 (16 weeks)
20 September 2021 (12 weeks)
4 October 2021 (10 weeks)
18 October 2021 (8 weeks)
15 November 2021 (4 weeks)

The full course lasts 44 weeks but students can join at later stages, depending on their English language level and needs.

Please contact us for advice on your current level of English, or see our website for more information.



# IELTS exam preparation

Regent's English Language Centre is a well-established and reputable course provider. Hundreds of dedicated and hard-working students have chosen us because of our excellent track record and expert teachers who specialise in IELTS preparation.

## Fees include:

- University induction
- English language lessons
- Access to the library and virtual learning environment
- Extra-curricular activities
- Student support services
- Course materials: coursebook\* and supplementary handouts
- Course certificate and monthly progress reports

\*One coursebook is included in the course fee. Students who move from one level to another will be required to purchase a new coursebook for £35 through Regent's online store.

The IELTS exam fee is not included in the course fee. Students wishing to book the exam will be assisted with the booking process.



We offer a free test to identify your language level.

**Click here** to enquire about the test.

## General English plus IELTS

**General English, Monday-Friday**  
**09:15-12:30**

**IELTS, Monday-Thursday**  
**13:30-15:00 (21 hours per week)**

This course is designed to develop the English language skills and exam techniques that you need to be successful in your IELTS exam.

General English lessons in the mornings will improve your confidence and boost your fluency when communicating in English.

Our experienced teachers will focus on improving your speaking, writing, listening and reading skills while covering various grammar structures, formal and informal vocabulary and pronunciation.

In the afternoons you will learn the exam techniques, strategies and all other aspects of the IELTS exam. You will be trained to complete reading, listening, speaking and writing tasks successfully. Our expert IELTS teachers will show you simple yet powerful ways to score a higher band in the exam.

The minimum level of English proficiency required is Intermediate B1. If you are aiming for a band 7 or higher you should ideally be at upper-intermediate level (B2/B2+).

Duration	Fees per week
2-16 weeks	£390
17-24 weeks	£360
25+ weeks	£325

### Start dates

#### 2020

12 and 26 October

9 and 23 November

7 December

#### 2021

11 and 25 January

8 and 22 February

8 and 22 March

6 and 19 April

4 and 17 May

1, 14, 28 June

12 and 26 July

9 and 23 August

6 September

4 and 18 October

1, 15, 29 November

6 December





*My experience at Regent's was very rewarding. Getting in touch with people from different cultures, participating in activities in a purely English-speaking environment and working with teachers who love their work has helped to develop my confidence and improve my English skills considerably.*

Kenza Yahmi, Algeria

## Intensive IELTS

**Monday-Thursday 09:15-12:30 and 13:30 to 15:00**  
**Friday 09:15-12:30**  
**(21 hours per week)**

This is an academic course for students who want to develop their skills and take the IELTS examination. You will develop your understanding of exam techniques and strategies for each of the exam components while developing your general English skills.

The course builds your confidence in reading, writing, listening, speaking and vocabulary. There is a range of examination practice and language development through engaging and stimulating activities and materials.

Lessons are communicative, with lots of interaction, pairwork and groupwork. There is also plenty of exam practice to help you develop the academic skills you need to pass the exam.

All students take a placement test on the first day of the course, followed by regular progress tests and mock IELTS exams. Teachers give continuous feedback on students' progress. Regular one-to-one tutorials give you the opportunity to revise your learning goals and discuss your strengths and areas for improvement.

You will also have access to extra-curricular activities provided by Regent's University London (e.g. trips to London sights, English conversation club, sports, taster lectures etc.) as well as the University's facilities (Regent's library and self-study areas, refectory, café etc.).

The minimum level of English proficiency required is Intermediate+ (B1+). If you are aiming for a band 7 or higher you should ideally be at upper-intermediate level (B2/B2+).

Duration	Total fee
4 weeks	£1,590
8 weeks	£3,040

Start dates	
12 July 2021	4 and 8 weeks
26 July 2021	4 weeks
9 August 2021	4 weeks

## IELTS Online

**Tuesdays and Thursdays, 18:30-20:00**  
**(UK time)**

This live online course will help you to achieve your best possible score in the IELTS exam by developing your language skills, including reading, listening, writing and speaking, as well as improving your pronunciation, grammar and vocabulary.

The course is taught by experienced English language teachers who have an extensive understanding of which strategies and techniques prove helpful for the IELTS exam.

Throughout the course your tutor will monitor your progress, give you feedback, correct your homework and advise you on the skills you still need to develop or improve to achieve your highest possible score.

Lessons are delivered live using the online platform Microsoft Teams, compatible with laptops and other mobile devices.

The minimum level of English proficiency required is Intermediate (B1+). If you are aiming for a band 7 or higher you should ideally be at upper-intermediate level (B2/B2+).

Duration	Total fee
12 weeks	£515
6 weeks	£270

Start dates	
2020	
14 September	6 and 12 weeks
26 October	6 weeks
2021	
11 January	6 and 12 weeks
22 February	6 weeks
20 September	6 and 12 weeks
1 November	6 weeks



# Summer English Plus

## Summer English Plus

**9:15 – 12:30 Monday to Friday**

**(15 hours per week)**

**Plus two afternoon workshops**

This course allows you to combine General English classes in the mornings with two afternoon activities each week, chosen from the following options:

- Business English workshop
- Employability Skills workshop
- IELTS workshop
- Sightseeing in London

The minimum duration for each course option is two weeks. Students on courses of four weeks or longer, can select to follow more than one of the afternoon options.

### ■ General English

The General English course in the mornings covers all skills (reading, writing, listening, speaking) as well as grammar, vocabulary and pronunciation.

The course will help to boost your confidence and improve your fluency when speaking English.

Classes are personalised and engaging, with a clear focus on meaningful and developmental activities which promote language learning in the context of the classroom and beyond.

Course content is flexible so that your teachers can respond to your individual strengths, weaknesses and needs.



### ■ Business English workshops

**(13:30 – 15:00 twice a week)**

These sessions will teach you the essential skills needed for business, such as presentations, negotiations, job applications and interviews, business correspondence, meetings and telephone English.

### ■ Employability Skills workshops

**(13:30 – 15:00 twice a week)**

These sessions will help you to develop the skills needed to communicate effectively and confidently in the modern workplace. It is ideal for individuals who are at an early stage in their career, preparing for a career change or aiming to find a job in an English-speaking workplace. Workshops cover how to succeed with job applications and interviews, effective workplace communication, and vocabulary and grammar for business situations.

### ■ IELTS workshops

**(13:30 – 15:00 twice a week)**

The workshops will familiarise you with each part of the IELTS exam (reading, writing, listening and speaking) as well as the exam techniques and strategies to prepare you for success in the exam.

### ■ Sightseeing in London

**(13:30 – 17:00 twice a week)**

Our tours and trips will enable you to explore both famous sights and hidden gems in London. You'll learn about British culture, customs, traditions and history while practising speaking English with your fellow students. This option will give you a perfect balance of academic, cultural and social experience.

The minimum level required for all the Summer Plus courses is Pre-intermediate (A2).

All students take a placement test and are placed in a General English class according to their level of English.

Afternoon workshops are delivered in mixed-ability groups.





*Not only have I improved my formal English, but I have also learnt about everyday native expressions on my course. The teachers tailor lessons to improve our weak points, which was very helpful.*

Kanako Abe, Japan

#### Fees include:

- University induction
- English language lessons and workshops or trips
- Access to the library and virtual learning environment
- Extra-curricular activities
- Student support services
- Course materials: coursebook\* and supplementary handouts
- Course certificate and monthly reports

#### Fees do not include:

- The IELTS exam fee
- Tube fare/bus fare for London trips

Students wishing to book the IELTS exam will be assisted with the booking process.

\*One coursebook is included in the course fee. Students who move from one level to another will be required to purchase a new coursebook for £35 through Regent's online store.

Duration	Fees per week for all Summer English Plus courses
1-10 weeks	£350

Duration	Fees per week with on-campus accommodation (Reid Hall, double or triple room) for all Summer English Plus courses
1-10 weeks	£690

Start dates	
28 June	10, 9, 8, 7, 6, 5, 4, 3, 2 weeks
12 July	8, 7, 6, 5, 4, 3, 2 weeks
26 July	6, 5, 4, 3, 2 weeks
9 August	4, 3, 2 weeks
23 August	2 weeks



*Studying in London at Regent's is a unique experience – you can get immersed in British English and share a class where you can learn about different cultures. The teachers were the best. I will always remember our trip to Greenwich - thanks to our teacher for giving us a more comprehensive experience.*

Gastón Vernaz, Argentina



# Winter English Plus

## Winter English Plus

**Monday-Friday 09:15-12:30,  
Sightseeing trip 13:30 to 17:00 twice a week OR  
Business English & Employability workshop 13:30 to 15:00  
twice a week**

Improve your English language skills and become confident in a business environment this winter. The Winter English Plus course covers 15 hours of General English lessons and two afternoon workshops or trips around London each week.

General English lessons in the morning focus on learning new grammar structures as well as improving your conversation and listening skills. You will also be able to improve your vocabulary range and pronunciation, together with reading and writing skills.

In addition, you will have the choice of two afternoon options twice a week:

### Business English & Employability workshops

These sessions will teach you the essential skills needed for business, such as presentations, negotiations, job applications and interviews, business correspondence, meetings and telephone English. Your business English vocabulary and knowledge will improve, to help you work more effectively and open up to new career opportunities.

### London sightseeing trips

This option gives you a perfect balance of academic, cultural and social experience. Following your morning classes, twice a week in the afternoon you will have a chance to visit attractive London sights in the company of your fellow students.

The minimum level required for the Winter Plus course is Pre-intermediate (A2). All students take a placement test and are placed in a General English class according to their level of English. Afternoon workshops are delivered in mixed-ability groups.

Duration	Fees per week
1-4 weeks	£350
Start dates	
11 January	4, 3, 2 weeks
25 January	2 weeks

*Thank you for an amazing six months at Regent's. My English was improved because of your great teachers. I enjoyed my school life there so much and will never forget that period.*

Shinji Sano, Japan





## English Conversation Online

The English Conversation course is designed to help you sound more natural and fluent when communicating in English. It will help to improve your speaking and listening skills in social, academic, and professional settings.

You will learn strategies for effective communication, as well as techniques for improving your pronunciation and expanding your vocabulary. By the end of the course you will have more confidence using English in both professional and casual conversations.

Our English language teachers always source stimulating resources to make each lesson engaging and interesting. You will create and develop interesting conversation practice by learning through authentic materials such as journals, videos and podcasts.

Some of the topics that you cover during the course might include:

- How to agree and disagree
- Giving and responding to opinions
- Being discreet
- Idioms
- Informal phrases
- Practising British English pronunciation
- Making suggestions and negotiating.

Duration	Fees per course
12 weeks	£450
6 weeks	£240

Start dates	
<b>2020</b>	
14 September	6 and 12 weeks
12 October	6 weeks
<b>2021</b>	
11 January	6 and 12 weeks
22 February	6 weeks
20 September	6 and 12 weeks
1 November	6 weeks

Sessions
Monday – Wednesday 18:30 – 20:00 (UK time)



## Private tuition

One-to-one tuition is available both on campus and online. Classes are tailored to your specific needs and your level of English. Depending on your goals, we can offer General English, Business English, Academic English or IELTS exam preparation.

We can focus on developing your speaking and/or other skills: reading, writing and listening. We can help you improve your grammar and pronunciation. Our experienced and qualified teachers will help you identify and work on your weaknesses, develop fluency, accuracy and gain confidence in speaking English.

If you would like to study together with a friend whose level of English and needs are similar to yours, you can choose 2:1 tuition.

1:1 online (1 student + 1 teacher)	
Tuition	Fee
1 trial session (90 mins)	£100
5 hours	£320
10 hours	£600

2:1 online (2 students + 1 teacher)	
Tuition	Fee
1 trial session (90 mins)	£130
5 hours	£420
10 hours	£800

1:1 on campus (1 student + 1 teacher)	
Tuition	Fee
1 trial session (90 mins)	£120
5 hours	£370
10 hours	£700

2:1 on campus (2 students + 1 teacher)	
Tuition	Fee
1 trial session (90 mins)	£150
5 hours	£470
10 hours	£900



# English Language Teacher Training



## English Language Teacher Training (bespoke group courses)

This bespoke course for closed groups combines theory and practice to advance and complement your existing teaching skills.

It's ideal for experienced English language teachers looking to improve and learn up-to-date techniques, methods and approaches to teaching English as a foreign language.

This two-week course will equip you with the right tools to become a more accomplished and knowledgeable professional in the ever-changing ELT market.

### Who is the course for?

- English language school or university English language teachers who have been teaching for at least two years
- English language teachers who want to progress to more senior roles
- Experienced teachers who want to extend their expertise in a specialist area
- Non-native English language speakers who have a CEFR Level of high B2 or above.

### What other teachers say about this course

Teachers who participated in the tailored teacher training courses have not only improved their English for professional but also personal purposes. They became familiar with new aspects of teaching methodology and teaching techniques as well as made use of a variety of teaching aids and resources provided by Regent's University London.

### What does the course cover?

This is a bespoke course that will be specially designed for your group. It can be delivered online or face-to-face at the Regent's campus, depending on your preference. Groups must be a minimum size of five participants.

The focus is on practical activities that allows the group to reflect and discuss their experiences. Below are just some of the areas covered for previous groups:

- Identifying teacher's needs
- Exploring teachers' beliefs about learning and teaching
- Various methods used in English language teaching: CLT, TBL, PPP, TTT, lexical approach, guided discovery
- Classroom management
- Lesson observation
- Learner motivation
- Error correction
- Teaching pronunciation
- Lesson planning
- Teaching receptive and productive skills
- Learner autonomy and study skills
- Using technology in the classroom
- Including British culture and history topics to enhance your lessons



*Having been familiar with the key teacher training principles, it was immensely beneficial to refresh and practise some teaching methods: TBL, visualization and many others. I liked it when the tutor recommended using this or that expression, more appropriate for the context. It's invaluable.*

Nataliya Solovyeva

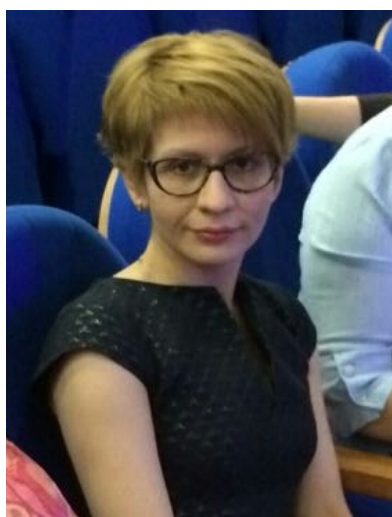


### Online – sample programme

Week 1	Monday	Tuesday	Wednesday	Thursday	Friday
13:30 – 14:45	Getting to know you Needs analysis	Teaching methodology – various approaches	Self-study	Teaching pronunciation	Teaching receptive skills – reading and listening
15:00 – 16:15	Speaking practice	Communicative language teaching	Self-study	Oral fluency and speaking skills	Providing feedback and correction techniques
Week 2	Monday	Tuesday	Wednesday	Thursday	Friday
13:30 – 14:45	Inductive and deductive approaches to teaching grammar	Teaching vocabulary	Self-study	Lesson planning Evaluating learning materials	World Englishes and ELF
15:00 – 16:15	Teaching grammar	Lexical approach	Self-study	Using authentic materials	Feedback Discussion

### On campus – sample programme

Week 1	Monday	Tuesday	Wednesday	Thursday	Friday
09:15-11:00 11:15-12:30	Induction	Getting to know you Needs analysis Speaking practice	Lesson observations (teachers observe English language classes at the ELC)	Teaching methodology – various approaches Communicative language teaching	Teaching receptive skills – reading and listening
13:30-15:00	Induction	Teaching pronunciation	Lesson observation feedback	Oral fluency and speaking skills	Providing feedback and correction techniques
Week 2	Monday	Tuesday	Wednesday	Thursday	Friday
09:15-11:00 11:15-12:30	Inductive and deductive approaches to teaching grammar	Teaching vocabulary	Lesson observations	Lesson planning Evaluating learning materials	World Englishes
13:30-15:00	Teaching grammar	Lexical approach	Lesson observation feedback	Using authentic materials	Feedback Discussions



*All the classes were interesting and replete with useful information and tasks that can be easily transferred to the classes I teach. I especially liked the class on the lexical approach and various types of tasks we were given to practise.*

Nina Skitina

This course is available to closed groups only, with a minimum of five participants. Contact Emilia Kruszewska on [kruszewe@regents.ac.uk](mailto:kruszewe@regents.ac.uk) to discuss the start date, rates and student numbers.









# ELC closure dates

**Christmas 2020:** 21 December 2020 – 8 January 2021

**Good Friday:** 2 April 2021

**Easter Monday:** 5 April 2021

**Early May Bank Holiday:** 3 May 2021

**Spring Bank Holiday:** 31 May 2021

**Summer Bank Holiday:** 30 August 2021

**Christmas 2021:** 20 December 2021 – 7 January 2022

Please note that we do not offer any refunds for bank holidays, or other pre-scheduled days when the Centre is closed.

**Apply all year round at [regents.ac.uk/elc](https://regents.ac.uk/elc)**



For a copy of this publication in an alternative format,  
please contact us on ELC +44 (0)20 7487 7477  
or [elc@regents.ac.uk](mailto:elc@regents.ac.uk)



Regent's University London  
Inner Circle  
Regent's Park  
London NW1 4NS  
United Kingdom

+44 (0)20 7487 7477  
[elc@regents.ac.uk](mailto:elc@regents.ac.uk)

[regents.ac.uk](http://regents.ac.uk)

The information contained in this document is correct at the date of publication, September 2020. Please visit our website for the latest information.

© Regent's University London 2020