

REGENT'S **CONNECT**

Language, cultural
and cross-cultural
elective modules for
all Regent's students



HANDBOOK FOR STUDENTS

Contents

1. What are the aims of this programme?	2
2. What do I gain by taking these electives?.....	3
Skills for the ‘T-shaped graduate’.....	3
3. Modules on offer through the Regent’s Connect programme	5
Foreign Languages – overview of modules.....	5
English for Academic Purposes (EAP) – overview of modules.....	7
Cross-Cultural and Cultural – overview of modules	8
4. What modules can I take by year/level of study?	10
5. Regent’s Connect modules will be offered on the following programmes	11
6. How are the modules assessed?	11
7. How do I enrol?	13
8. Can I take these modules not-for-credit?	13
9. Will I get a certificate for taking these electives?	13

1. What are the aims of this programme?

Regent's University London is diverse like no other university in the UK. Its student population represents a genuine international and multicultural mix, without any one dominant nationality. The Regent's Connect Programme supports and builds on this diversity by offering a choice of language, culture and cross-cultural modules that can be taken by Regent's students from any programme.

The diversity at Regent's is enshrined in the Regent's mission and strategic goals:

Mission: Developing tomorrow's global leaders

We aim to provide a high-quality teaching environment to develop internationally aware, innovative and employable graduates.

The University has five main strategic goals:

1. Academic Excellence
2. Internationalism and Global Perspective
3. Professionalism and Employability
4. Management and Sustainability
5. Public Benefit

These strategic goals feed in turn into the University's Teaching & Learning Strategy (LTAS): one of the five aims of this strategy is 'Developing cultural agility, flexibility and the ability of our graduates to compete strongly in the global labour market by enabling access to electives, languages and study abroad.' The Regent's Connect programme reflects how these strategic goals inform its curriculum at the module level. It offers you the opportunity to explore and discuss intercultural communication and relations in a supportive environment, where you can expand your international and cross-cultural capabilities. The university values the different perspectives that you as a student bring to Regent's and wants to encourage you to engage in intercultural dialogue. Language learning, the study of another culture or the study of cross-cultural issues are all inherently intercultural undertakings.

In support of these goals, the Regent's Connect programme offers a choice of elective modules for students of all programmes at undergraduate and postgraduate level, in:

- ***Foreign languages: Arabic, Chinese, French, German, Italian, Japanese, Portuguese, Russian, and Spanish***
- ***Cultural and Cross-cultural Studies***
- ***English for Academic Purposes (EAP)***

2. What do I gain by taking these electives?

Developing competence in a **foreign language** addresses the following areas:

1. General linguistic competence
2. Transferable professional skills, such as communication
3. Cultural and intercultural understanding
4. Employability

In order to be of professional value, competence in a foreign language needs to involve a set of core cognitive and interpersonal skills such as effective communication and adaptation - the ability to adjust to the needs of an interlocutor, and to the requirements of different cultural contexts.

Language learning does not only give you language skills. There are many hidden **skills** you can gain when learning another language, that are 'below the waterline':¹



By studying a **cross-cultural module**, you gain insight into other cultures and societies and learn to improve your level of communication skills and intercultural competence.

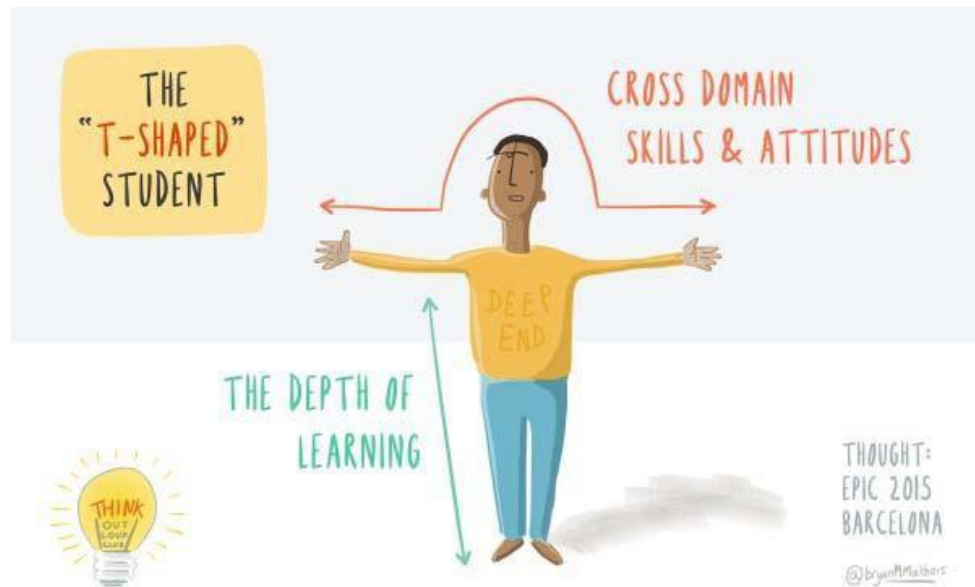
Studying **English for Academic Purposes** will help you develop your academic English skills in listening, speaking, reading and writing and help improve your performance on other modules.

Skills for the 'T-shaped graduate'

Employers across all sectors have emphasised the need for today's students to possess not just in-depth knowledge of their subject discipline, but also to demonstrate the ability to operate across disciplines and manage social and cultural differences effectively. In addition

¹Image source: Lallana, A., & Pastor-González, V. (2016). Spanish for business: a journey into employability. In E. Corradini, K. Borthwick and A. Gallagher-Brett (Eds), *Employability for languages: a handbook* (pp. 155-160). Dublin: Research-publishing.net. <http://dx.doi.org/10.14705/rpnet.2016.cbg2016.477>

to deep knowledge in one subject (your discipline, whether this is business or psychology etc.), graduates need to have ‘boundary crossing competencies’ – these include communicating effectively and across linguistic boundaries, demonstrating global understanding, the ability to build networks, and excelling at teamwork. These “T-shaped graduates” are in high demand by employers because they possess those abilities.²



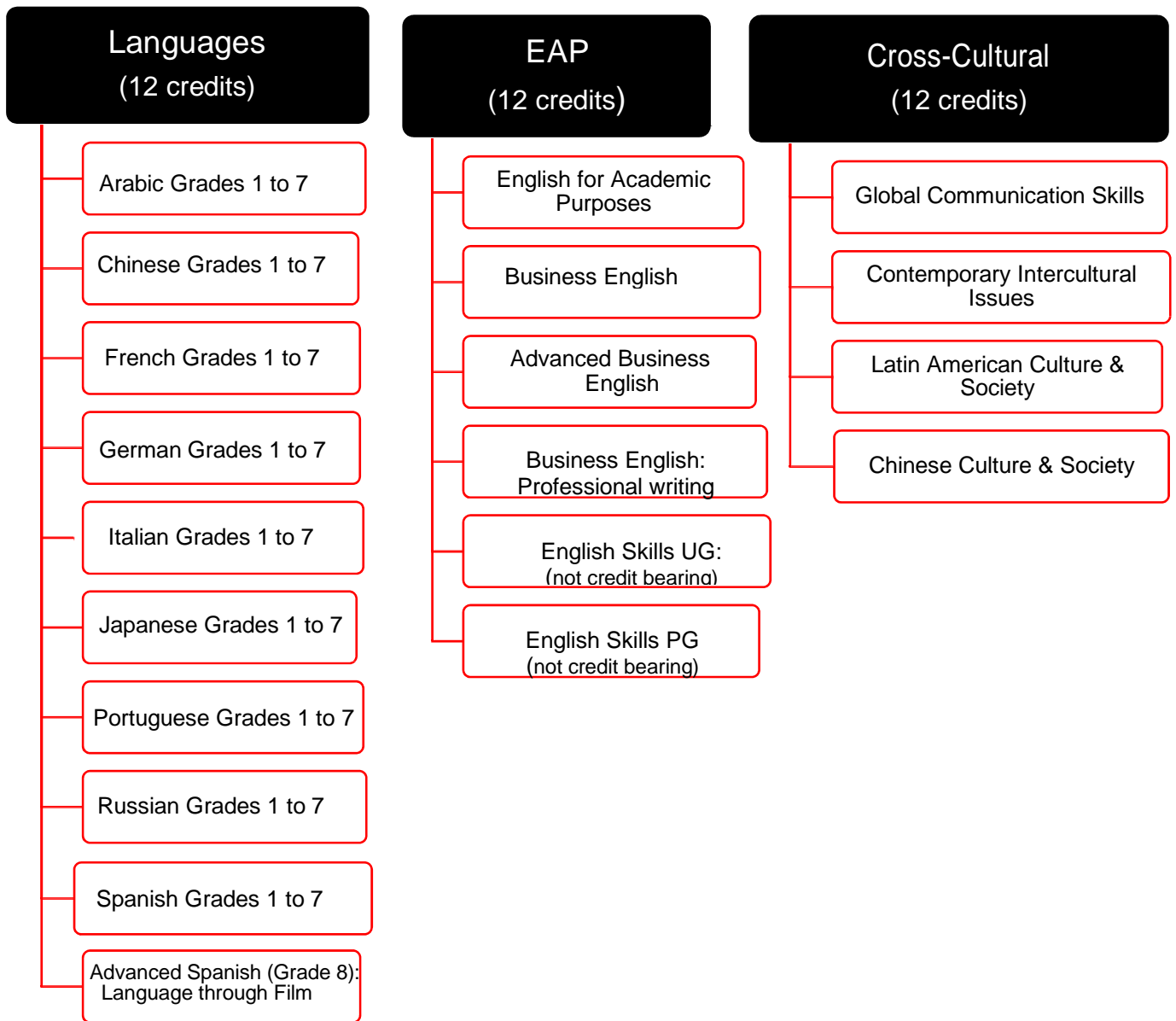
The best way of developing these desirable attributes in students is to integrate them into the curriculum from the earliest stages. We believe that the modules within Regent’s Connect will help students broaden their knowledge base, whilst at the same time they provide a learning environment to develop the skills associated with the horizontal stroke of the “T”.

The Regent’s Connect programme supports the development of **five** of the Regent’s Graduate attributes:

Collaborative
Reflective
Connected
International
Ethical

² Image source: The T-Shaped Student by Bryan Mathers: <http://bryanmmathers.com/?s=t-shaped>

3. Modules on offer through the Regent's Connect programme



Foreign Languages – overview of modules

Language elective modules (12 credits each) are offered at seven different grades, from Grade 1 (for students with no prior study of the language) to Grade 7 (upper intermediate level).

Each module has a number of different themes including one that explores the connection of the language and culture with London. A short excursion or trip related to that connection will normally be part of the module programme for the term.

Module choices:

Arabic, Chinese, French, German, Italian, Japanese, Portuguese, Russian, and Spanish (Grades 1-7)

Advanced Spanish Language through Film (Grade 8)

The 7 grades represent a seamless continuum with regard to the progression in language competence. Your level will be assessed in a placement test in advance of the term when you wish to take the module and you will be advised regarding the right module for your level.

Students taking these language modules may come from different levels of study (year 1, 2 or 3 undergraduate, or postgraduate), and from different programmes and disciplines, which will allow for contributions from varying perspectives.

Students taking three successive modules in one language will receive a *Certificate of Language Achievement* upon successful completion of the three modules.

English for Academic Purposes (EAP) – overview of modules

Modules in EAP (12 credits each) are offered for students who

- want to improve and perfect their professional English skills or their writing skills in particular
- come to Regent's for exchange and want to use their time at Regent's and in the UK to boost their level of English
- need additional support with their English at the start of their studies at Regent's.

Module choices:

English for Academic purposes - undergraduate level 4, term one only

This module is only for term one, year one, undergraduate students who have been identified as requiring support with their academic English with a particular focus on writing and reading in academic settings. Students will be allocated to this module; it is not a free-choice option.

Business English: Professional Writing

A module for undergraduate and postgraduate students (non-native speakers of English) who want to develop their English writing skills for workplace and professional settings. It is available for students with a minimum of IELTS 6.0 (writing component) and up to a maximum of 7.5 (writing component).

Business English

A course for students (non-native speakers of English) who want to enhance their Business English language skills to boost employability. It will also support students in their performance in other modules. Available for students with a minimum of IELTS 6.0 and a maximum of IELTS 7.5 (overall score).

Advanced Business English

An advanced level course for students (non-native speakers of English) who want to enhance their Business English language skills to boost employability. It will also support students in their performance in other modules. Available for students with a minimum of IELTS 6.5 and a maximum of IELTS 7.5 (overall score).

Enrolment for all EAP modules is via a placement test or the Regent's Post-Enrolment English Language Assessment.

English Skills are non-credit bearing but timetabled modules offered providing additional support to students at Undergraduate and Postgraduate level.

Cross-Cultural and Cultural – overview of modules

Modules in Cross-cultural and Cultural studies (12 credits each) help students develop intercultural competence and the related skills of communication, openness and flexibility, and cultural agility. They also offer students an opportunity to explore and understand intercultural issues that shape the contemporary world and society.

Module choices for Cross-Cultural studies:

Global Communication Skills
A module for first-year students that looks at different ways of thinking, behaving and communicating and enables students to develop practical skills for effective communication in intercultural situations, e.g. working in multicultural teams.
Contemporary Intercultural Issues
A module for second-year students that investigates contemporary global issues with an intercultural dimension, and how identities at the personal and social level shape intercultural relations.

Module choices for Cultural studies:

Chinese Culture & Society

A module for undergraduate students in their second year who wish to develop an understanding of contemporary China. In this course students will explore and analyse a series of cultural phenomena/objects (from Confucianism to the Great Wall of China) from a multidisciplinary perspective in order to gain an insight into the underlying socioeconomic issues affecting the country.

Latin American Culture & Society

A module for undergraduate students in their second year who wish to develop an understanding of contemporary Latin America. In this course students will explore and analyse a series of cultural phenomena/objects (from rap music to muralism) from a multidisciplinary perspective in order to gain an insight into the underlying socioeconomic issues affecting the region.

4. What modules can I take by year/level of study?

Level 4 (UG Year 1)	<ul style="list-style-type: none"> • Arabic, Chinese, French, German, Italian, Japanese, Portuguese, Russian, Spanish (Grades 1-7) • (Grade 8) Advanced Spanish Language through Film*
	<ul style="list-style-type: none"> • Global communication Skills
	<ul style="list-style-type: none"> • English for Academic Purposes • Business English* • Advanced Business English* • Business English: Professional writing
Level 5 (UG Year 2)	<ul style="list-style-type: none"> • Arabic, Chinese, French, German, Italian, Japanese, Portuguese, Russian, Spanish (Grades 1-7) • (Grade 8) Advanced Spanish Language through Film*
	<ul style="list-style-type: none"> • Contemporary Intercultural Issues • Latin American Culture & Society • Chinese Culture & Society
	<ul style="list-style-type: none"> • Business English* • Advanced Business English* • Business English: Professional writing
Level 6 (UG Year 3/4)	<ul style="list-style-type: none"> • Arabic, Chinese, French, German, Italian, Japanese, Portuguese, Russian, Spanish (Grades 1-7) • (Grade 8) Advanced Spanish Language through Film*
	<ul style="list-style-type: none"> • Business English* • Advanced Business English* • Business English: Professional writing
Level 7 (Postgrad)	<ul style="list-style-type: none"> • Arabic, Chinese, French, German, Italian, Japanese, Portuguese, Russian, Spanish (Grades 1-7) • (Grade8) Advanced Spanish Language through Film*
	<ul style="list-style-type: none"> • Business English* • Advanced Business English* • Business English: Professional writing • English Skills

*offered at various levels but can only be taken once

5. Regent's Connect modules will be offered on the following programmes:

Undergraduate programmes:

- Acting for Screen and Stage
- Fashion Design
- Fashion Marketing
- Film and Screen
- Global Management
- Interior Design
- International Business
- International Events Management
- Liberal Studies
- Philosophy, Politics and Economics
- Psychology

Postgraduate programmes:

- Enterprise
- international Business
- International Fashion Marketing
- Psychology

Please check in your programme handbook or with your Head of Programme as to which of the Regent's Connect modules your programme allows you to take.

6. How are the modules assessed?

Language and EAP (English for Academic Purposes) modules can be taken by students at various levels within their programme of study – whether you are in your first, second or third year of your undergraduate programme, or whether you are studying for a master's degree. The assessment requirements will differ slightly according to your level of study, so that you can demonstrate achievement of learning outcomes related to your level. Hence, assessment details and criteria may differ slightly depending on for example whether you are a Year 1 or Year 2 student, although both of you may be studying in the same class.

Language modules are assessed through:

- an in-class test which evaluates progress in reading, writing and grammar skills, held in the last quarter of the term
- a speaking test and an individual research project ('Cultural Challenge'), both at the end of term

The requirements for the individual research project ('Cultural Challenge') will be different depending on your level of study (whether undergraduate or postgraduate, whether you are in your first, second or third year of undergraduate studies).

The cultural challenge will give you the opportunity to expand your knowledge of the society and culture of the countries or communities where the target language is spoken. It will also give you the opportunity to explore the presence, influence and evolution of that culture in the context of a cosmopolitan city such as London. This will be done through experiential activities or academic research depending on your level of study.

At the beginning of the term, the teaching team will set out a series of cultural challenges, depending on your level of study, and you will be carrying out your investigations throughout the term and submit your findings online (in the target language or in English, depending on the proficiency level) before the end of term.

The type of task will differ by level and will require different degrees of engagement and autonomy:

FHEQ level	Description of the level of challenge and autonomy expected of the learner
Level 4	Operates in predictable contexts Uses a specified range of information sources Communicates results effectively
Level 5	Operates in situations of varying complexity and predictability Explores data to identify patterns and relationships Communicates results effectively
Level 6	Operates in complex, unpredictable contexts Identifies and defines complex problems Argues from competing perspectives Communicates results effectively
Level 7	Operates in complex, unpredictable contexts Identifies and defines complex problems Uses ideas at a high level of abstraction Judges the appropriateness of the enquiry methodologies

You are given the opportunity to present your findings in two different formats: a written essay or an audio-visual project.

- Level 4: 900 word written essay, **OR** 2-minute video/audio project+ 200 word statement.
- Level 5: 1100 word written essay, **OR** 3-minute video/audio project+ 300 word statement.
- Level 6: 1300 word written essay, **OR** 4-minute video/audio project+ 400 word statement.
- Level 7: 1300 word written essay, **OR** 4-minute video/audio project+ 400 word statement.

Regent's University London has an Assessment Framework that recommends that study programmes and modules should use a variety of assessment methods that reflect the different learning styles and requirements of students. Therefore, language modules use an in-class time constrained written test, an oral test, and offer the choice of a written or video/audio assignment.

EAP modules are assessed through a variety of assessment tasks, depending on the module, and including oral presentations held in class, timed written reflective reports produced in class, timed written proposals produced in class. The type and requirements of these tasks will differ by level of study (whether undergraduate or postgraduate, whether in their first, second

or third year of undergraduate studies) and will require a progressively deeper degree of engagement and autonomy commensurate with the level.

Cultural and Cross-cultural modules are assessed through individual essays, individual and group presentations, field studies, quizzes, and other coursework tasks. These modules are for students at one level only (all for level 5, except Global Communication Skills at level 4). Details about the assessment can be found in the module specifications.

7. How do I enrol?

The modules will be offered in both, Autumn and the Spring terms. A limited offer may be available in the Summer term. It should be noted that a module will only run if there is enough demand for a particular module (e.g. a language at a particular grade) in any one term.

Enrolment takes place in the term prior to the term in which you wish to take the module: normally in March students enrol for electives for the following Autumn term, and in October students can enrol for the following Spring term.

You can enrol online. If you enrol for a Language module you will need to complete a brief placement test, to ensure we allocate you to the right module/grade.

If you have existing knowledge, you may already speak the language too well to be able to take it as part of your study programme. You will be advised accordingly.

If you enrol for an EAP module you will also have to undertake a placement test or the Regent's Post-Enrolment English Language Assessment.

8. Can I take these modules not-for-credit?

If you don't need electives for credit to count towards your degree, you can still take electives from the Regent's Connect programme but you need to pay a module fee (you can find information about the fee on the Regent's website under Regent's Connect). You may for example want to learn a new language or improve a language you speak, but you have enough credit-bearing electives already, or your programme does not allow you to take an elective in a given term. In this case you can still take an elective from this programme (fee-paying), as long as it fits in your timetable and does not clash with modules that you take for credit.

9. Will I get a certificate for taking these electives?

If you take any of these modules for credit as part of your programme, the module title and module results will appear on your transcript, like for any other module. If you take three consecutive language modules (of the same language) and thereby demonstrate that you have built up your competence in the foreign language over a longer period, with your third module being Grade 3 or above, you will receive a Certificate of Language Achievement.