

A photograph of three young adults walking along a paved path in front of a large, multi-story brick building covered in ivy. The building has many windows, some of which are arched. A flagpole with a flag is visible on the left side of the building. The sky is clear and blue. The three people are smiling and looking towards the camera. The man on the left is wearing a denim jacket and jeans, holding a coffee cup. The woman in the middle is wearing a dark jacket and jeans. The man on the right is wearing a dark jacket and jeans.

English Language Courses

2022

4th in London
for learning
community

6th in London
for student
satisfaction



Welcome to Regent's University London

Based on Regent's campus in royal Regent's Park in the heart of London, our English Language Centre offers a wide variety of courses to suit your personal goals.

We offer a personalised, practical approach to teaching with the chance to practise your language skills on the ground in one of the world's most exciting capital cities.

You'll study alongside students from over 140 nationalities on campus, making friends and future contacts from all corners of the globe.


Courses

| | |
|---------------------------------|----|
| General English | 8 |
| Intensive English | 8 |
| Pre-sessional Course | 9 |
| General English plus IELTS..... | 11 |
| Summer English Plus..... | 12 |
| Private & Group bookings | 14 |



My experience at Regent's was very rewarding. Getting in touch with people from different cultures, participating in activities in a purely English-speaking environment and working with teachers who love their work has helped to develop my confidence and improve my English skills considerably.

Kenza Yahmi, Algeria



At Regent's, London is both your classroom and your playground. The city's culture, heritage and commerce form an essential part of your student experience.

Learning English in London

Regent's English Language Centre is a British Council-accredited language school and an English UK member that has helped hundreds of students across 27 years.

Our English language teachers ensure your learning is always varied – with the chance to put your skills into practice with trips, walking tours and mini tests.

Studying at the English Language Centre offers much more than an academic education. You'll also become part of the Regent's community, immersing yourself in life on campus:

- Access everything the University has to offer, from sweeping lawns to breakout study areas, a library, IT suites, cafes and bars
- Experience a taste of student life – attend extra-curricular activities including Conversation Club and mix with students across all degrees and nationalities
- Receive personal support from our student wellbeing team and book one-to-one sessions with friendly advisors – just like a full-time student
- Join a tailored induction programme built specifically for our ELC students – introducing you to campus and helping you access the library, study rooms and your student email
- Receive Associate Alumni status when you complete a course of 10+ weeks – giving you access to discounts, clubs, events and volunteering opportunities.

A personal education

Every student receives a personal welcome from either our Head of ELC, Monika Wierzanska-Villar, or one of your future ELC teachers, who will talk to you about your goals and how you can make the most out of your time at Regent's.

You'll learn in a supportive, personalised environment where staff and students get to know each other by name – ensuring you receive the personal attention needed to progress quickly.

Practical learning

Studying at the ELC, you'll have plenty of opportunities to practise your English language skills in class, around campus and throughout London.

Classes are fun and engaging, with a focus on task-based activities that promote critical thinking, problem-solving and an understanding of British culture.

You'll do much more than worksheets – you'll practise presentation skills, write professional and personal emails and talk with classmates about topics relevant to you.

Outside of the classroom, informal trips take you on walking tours of London's top sights like the River Thames, where you'll test your skills and fluency through mini challenges.

Excellent transport links make it easy to get around. You'll be within easy reach of all that this exciting European city has to offer.



Close to
Baker Street
station



Less than one hour's
travel from most
London airports

10

minutes by
Underground
from the Eurostar

Enjoy the sights of London's West End.



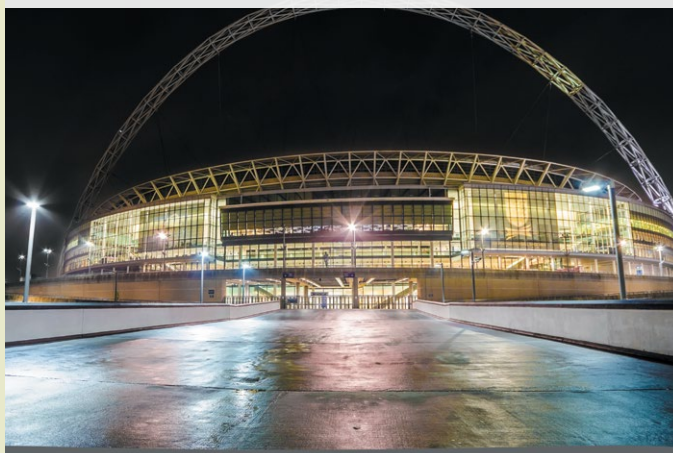
Shop in top London stores.



Visit galleries and museums.



Close to major sports venues.



Studying in London gave me
the opportunity to immerse
myself in British culture,
and as a result my English
improved very quickly.

Ambre Vochelet, France



Apply all year round at regents.ac.uk/english

11 acres of private garden in the heart of London.

Cosmopolitan campus

Our secure campus is set in a quiet, leafy park in the centre of London – offering a safe respite from the city, with gated access and a 24/7 security presence.

Here, you'll be a part of one of the most international universities in the United Kingdom.

With classmates from all corners of the world, you'll make international friends, learn about other cultures and build a global network of contacts for the future.

Mixing with almost 3,000 international students on campus, you'll never be just another face in the crowd.

Discover new opportunities

When you join Regent's English Language Centre, you'll have access to everything the University has to offer. You'll find plenty of opportunities to have fun and get involved:

- Visit the library and access electronic resources
- Catch up on work in private study areas, IT suites and Mac labs
- Book private rooms for group work or presentations
- Meet friends in The Refectory, Brasserie or Bedford's Bar
- Chat to our Support & Wellbeing teams
- Join in with Student Union parties, sports, workshops

You'll be within easy reach of top London attractions, such as the National Gallery, Tate Britain, West End theatres and the British Museum.



"Talking with classmates from different countries and understanding different cultural histories and customs is really fun. My view of the world has expanded."

Ying Jiang, China

47 student nationalities at the English Language Centre in the past two years

42%
from Europe

32%
from Asia

26%
from the rest of the world



'I thought it would be best to join a diverse university in London with people from all over the world and teachers who will teach you accurate English. My experience was even better than I imagined.'

Hamid Karim Damani, Paraguay



'I love being part of an international melting pot. At Regent's, you don't feel alone in being a foreign student – you feel part of something bigger.'

Chloe Young, France and Jamaica.



A short walk away from the campus is Marylebone Village, a lively historical area, known for its up-market boutiques, cafés and designer shops.



The Regent's campus is located in the beautiful, peaceful surroundings of a royal park.



Enjoy a lively social life, with regular social events on campus.

Regent's Be Active fitness programme offers classes such as yoga and pilates on campus.



With coffee shops, restaurants and bars on campus, you will find plenty of choice for food and drink and places to meet your friends.

Apply all year round at regents.ac.uk/english

A home away from home

No matter the duration of your studies as an English Language Centre student, we have a range of accommodation options, both on and off campus, to suit your needs.

On-campus accommodation

Reid Hall is located on our campus in Regent's Park overlooking the surrounding gardens. Living on campus allows you to relax and socialise, while being just moments away from the classroom and campus facilities.

Summer 2022 prices

| | |
|---------------------|-----------------------------|
| Reid Hall single | £425 a week, food* included |
| Reid Hall twin | £345 a week, food* included |
| Oliver Flats single | £475 a week, food* included |
| Oliver Flats twin | £425 a week, food* included |

Autumn 2022/Spring 2023 prices

| | |
|---------------------|-----------------------------|
| Reid Hall single | £430 a week, food* included |
| Reid Hall twin | £350 a week, food* included |
| Oliver Flats single | £480 a week, food* included |
| Oliver Flats twin | £430 a week, food* included |

*Prices are per person, per week and include £90 of meal credit. This does not guarantee you three meals a day, seven days a week: you must budget to make it last. If it runs out you can add more credit.

To minimise the risk of COVID-19 and to ensure the safety of students and staff, we've introduced several measures:

- All students will be accommodated in single rooms
- Frequent cleaning and ventilation in all communal areas
- Hand sanitiser widely available

To find out more, email elc@regents.ac.uk



Homestay accommodation

Homestay enables you to experience a British way of life while you study. Private and homestay accommodation options are available throughout London, organised by experienced external providers. They are conveniently located, close to public transport. You can socialise and eat with your host(s), giving you the chance to practise your English outside the classroom. Hosts are selected for their friendliness and homes must meet British Council and English UK standards.

- Single furnished rooms with bed, desk, chair and storage
- Shared bathroom facilities
- Access to main living areas
- Within normal commuting distance of central London
- Two weeks minimum stay
- Never more than 4 students sharing one home
- Continental breakfast and evening meal included

| | |
|-------------------------------|--------------------|
| Standard single room Zone 2 | £260.00 per week * |
| Standard single room Zone 3 | £240.00 per week* |
| Standard single room Zone 4&5 | £225.00 per week* |

To be matched with the right host, please book well in advance. Let us know of any requirements (e.g. dietary/medical, whether you smoke, allergy to pets) by completing the off-campus accommodation request form.

*For anyone aged under 18, a supplement of £15.00 per person per week will be added to cover additional responsibility and DBS check. Under 18s may only be accommodated on half board basis (breakfast and dinner).



Terms and conditions

- A £250 deposit is required upon completing an accommodation request form as well as an £80 non-refundable accommodation booking fee.
- Bookings cannot be cut short within the first four weeks of stay. Thereafter two weeks' notice will apply.
- Cancellation, postponement and curtailment of stay received less than two weeks prior to arrival, or no show, will incur a charge of two weeks.
- In addition, the following charges may apply:
 - £15 supplement per person per week for summer bookings (July and August).
 - £35 supplement per person for bookings over the Christmas period.
 - £30 supplement per person per week for special diets.
- Rates are valid until 31 December 2022, but are subject to change.

Apply all year round at regents.ac.uk/english

Courses

- Start dates every two weeks
- We will assess your English to ensure that you're in a class with other students at a similar level

General English

**Monday - Friday 09:15-12:30
(15 hours per week)**

This course is aimed at students who would like to improve their general English skills (reading, writing, listening and speaking) as well as vocabulary, grammar and pronunciation.

| Duration | Fees per week |
|-------------|---------------|
| 2-16 weeks | £300 |
| 17-24 weeks | £270 |
| 25+ weeks | £245 |

Intensive English

**Monday - Thursday 09:15-12:30
and 13:30-15:00
Friday 09:15-12.30
(21 hours per week)**

An intensive course combining General English in the mornings with English skills classes in the afternoons.

The focus of the afternoon class is interaction and communication, while putting into practice the vocabulary and grammar you learned in the morning

On Friday afternoons you can choose to have free time or participate in an extra-curricular activity.

| Duration | Fees per week |
|-------------|---------------|
| 2-16 weeks | £390 |
| 17-24 weeks | £360 |
| 25+ weeks | £325 |

Enrolment dates

2022

10 and 24 January

7 and 21 February

7 and 21 March

4 and 19 April

3, 16 and 30 May

4, 11, 18 and 25 July

1, 8, 15 and 22 August

5 and 19 September

3, 17 and 31 October

14 and 28 November

5 December

English levels:

Pre-intermediate (A2) to Advanced (C1)

Course length:

A minimum of 2 weeks, depending on a student's individual needs and current level of English

Students complete monthly progress tests if their course is 4 weeks or longer.

Please contact us for advice on your current level of English.

All our classes have a maximum of 15 students

The minimum age for students wishing to join a course is 16 years old

Classes run from Monday to Friday

There is a 15-minute break during morning classes

Fees include:

- University induction
- English language lessons
- Access to the library and virtual learning environment
- Extra-curricular activities such as a weekly Conversation Club and London trips
- Student support services
- Course materials: coursebook* and supplementary handouts
- Course certificate and monthly progress reports

*One coursebook is included in the course fee. Students who move from one level to another will be required to purchase a new coursebook for £35 through Regent's online store.



'My course has really improved my English skills and has made me more confident to communicate in English, so I can participate in activities and social clubs outside of the university.'

Shunnosuke Yoshizawa, Japan

Pre-sessional Course

Monday - Thursday
09:15-12:30 and 13:30-15:00
Friday 09:15-12:30
(21 hours per week)

This course is designed for students who currently hold an offer for a degree programme at Regent's University London, or any other UK based institution.

It provides an overview of academic culture in the UK, develops general and academic English and explores different types of academic assessment.

Upon successful completion of the course, students can progress directly to their chosen degree programme at Regent's, provided they have met the entry requirements.

| Duration | Fees |
|----------|---------|
| 44 weeks | £14,525 |
| 34 weeks | £11,275 |
| 24 weeks | £8,025 |
| 20 weeks | £6,910 |
| 16 weeks | £5,625 |
| 12 weeks | £4,295 |
| 10 weeks | £3,670 |
| 8 weeks | £3,020 |
| 4 weeks | £1,760 |
| 6 weeks | £2,340 |

Start dates leading to degree programmes beginning September 2022

10 January (34 weeks)

21 March (24 weeks)

19 April (20 weeks)

16 May (16 weeks)

11 July (8 weeks)

25 July (6 weeks)

8 August (4 weeks)

The full course lasts 44 weeks but students can join at later stages, depending on their English language level and needs.

Please contact us for advice on your current level of English, or see our website for more information.

Our teachers
have internationally
recognised qualifications
such as Cambridge
CELTA, DELTA/DipTESOL

Accredited by the



for the teaching
of English in the UK

MEMBER

ENGLISH
UK

Apply all year round at regents.ac.uk/english



'Studying at the English Language Centre prior to my master's really prepared me for the academic language of Regent's as well as getting to know the University, lecturers and students. I left feeling so much more confident'.

Meryem El Hayani, MA Management alumna, Morocco.

Call us on +44 (0)20 7487 7477

IELTS exam preparation

Hundreds of dedicated and hard-working students have chosen us because of our excellent track record and expert teachers who specialise in IELTS preparation.

Fees include:

- University induction
- English language lessons
- Access to the library and virtual learning environment
- Extra-curricular activities such as a weekly Conversation Club and London trips
- Student support services
- Course materials: coursebook* and supplementary handouts
- Course certificate and monthly progress reports

The IELTS Academic and General Training test costs from £175-195 depending on your location

The IELTS exam fee is not included in the course fee. Students wishing to book the exam will be assisted with the booking process.

*One coursebook is included in the course fee. Students who move from one level to another will be required to purchase a new coursebook for £35 through Regent's online store.



We offer a free test to identify your language level.

Email elc@regents.ac.uk to enquire about the test.

General English plus IELTS

**General English, Monday-Friday
09:15-12:30**

**IELTS, Monday-Thursday
13:30-15:00 (21 hours per week)**

This course is designed to develop the English language skills and exam techniques that you need to be successful in your IELTS exam.

General English lessons in the mornings will improve your confidence and boost your fluency when communicating in English.

Our experienced teachers will focus on improving your speaking, writing, listening and reading skills while covering various grammar structures, formal and informal vocabulary and pronunciation.

In the afternoons you'll learn the exam techniques, strategies and how to complete reading, listening, speaking and writing tasks successfully. Our expert IELTS teachers will show you simple yet powerful ways to score a higher band in the exam.

The minimum level of English proficiency required is Intermediate B1. If you are aiming for a band 7 or higher you should ideally be at upper-intermediate level (B2/B2+).

| Duration | Fees per week |
|-------------|---------------|
| 2-16 weeks | £390 |
| 17-24 weeks | £360 |
| 25+ weeks | £325 |

| Start dates |
|----------------------|
| 2022 |
| 10 and 24 January |
| 7 and 21 February |
| 7 and 21 March |
| 4 and 19 April |
| 3, 16, 30 May |
| 4, 11, 18, 25 July |
| 1, 8, 15, 22 August |
| 5, 19 September |
| 3, 17 and 31 October |
| 14 and 28 November |
| 5 December |



Summer English Plus

Summer English Plus

**9:15 – 12:30 Monday to Friday (15 hours per week)
Plus two afternoon workshops**

This course allows you to combine General English classes in the mornings with two afternoon activities each week, chosen from the following options:

- Business and Employability Skills workshop
- Sightseeing in London

The minimum duration for each course option is two weeks. Students on courses of four weeks or longer can select to follow more than one of the afternoon options.

■ General English

The General English course in the mornings covers all language skills (reading, writing, listening, speaking) as well as grammar, vocabulary and pronunciation.

The course will help to boost your confidence and improve your fluency when speaking English.

Classes are interactive and engaging, with a clear focus on meaningful and developmental activities which promote language learning in the context of the classroom and beyond.

Course content is flexible so that your teachers can respond to your individual strengths, weaknesses and needs.

■ Business and Employability Skills workshops (13:30 – 15:00 twice a week)

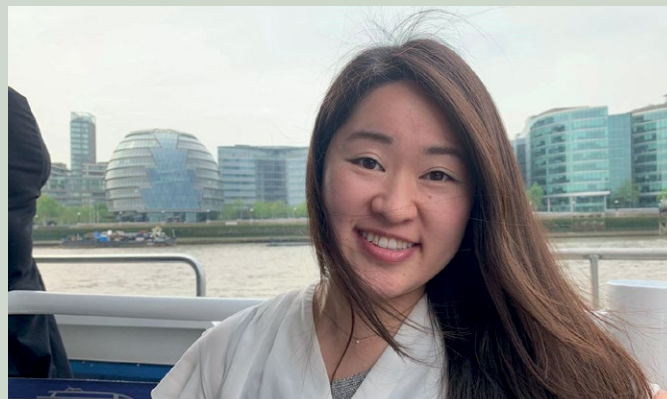
These sessions will help you to develop the skills needed to communicate effectively and confidently in the modern workplace. They are ideal for individuals who are at an early stage in their career, preparing for a career change or aiming to find a job in an English-speaking workplace. Workshops cover how to succeed with job applications and interviews, effective workplace communication, and vocabulary and grammar for business situations.

■ Sightseeing in London

(13:30 – 17:00 twice a week)

Our tours and trips will enable you to explore both famous sights and hidden gems in London. You'll learn about British culture, customs, traditions and history while practising speaking English with your fellow students. This option will give you a perfect balance of academic, cultural and social experience.

- The minimum level required for all the Summer Plus courses is Pre-intermediate (A2).
- All students take a placement test and are placed in a General English class according to their level of English.
- Afternoon workshops are delivered in mixed-ability groups.



'Not only have I improved my formal English, but I have also learnt about everyday native expressions. The teachers tailor lessons to improve our weak points, which was very helpful.'

Kanako Abe, Japan

Fees include:

- University induction
- English language lessons and workshops or trips
- Access to the library and virtual learning environment
- Extra-curricular activities such as a weekly Conversation Club and London trips
- Student support services
- Coursebook* and supplementary handouts
- Course certificate and monthly reports

Fees do not include:

- The IELTS exam fee
- Tube fare/bus fare for London trips

Students wishing to book the IELTS exam will be assisted with the booking process.

*One coursebook is included in the course fee. Students who move from one level to another will be required to purchase a new coursebook for £35 through Regent's online store.

| Duration | Fees per week with on-campus accommodation for all Summer English Plus courses |
|------------|--------------------------------------------------------------------------------|
| 2-10 weeks | £690 |

| 2022 start dates | |
|------------------|------------------------------|
| 4 July | 9, 8, 7, 6, 5, 4, 3, 2 weeks |
| 11 July | 8, 7, 6, 5, 4, 3, 2 weeks |
| 18 July | 7, 6, 5, 4, 3, 2 weeks |
| 25 July | 6, 5, 4, 3, 2 weeks |
| 1 August | 5, 4, 3, 2 weeks |
| 8 August | 4, 3, 2 weeks |
| 15 August | 3, 2 weeks |
| 22 August | 2 weeks |



'Studying in London at Regent's is a unique experience – you'll be immersed in British English and learn about different cultures from your classmates. The teachers were the best. I will always remember our trip to Greenwich – thanks to our teacher for giving us a more comprehensive experience.'

Gastón Vernaz, Argentina



Private & group bookings

Private tuition

One-to-one tuition is available both on campus and online. Classes are tailored to your specific needs and your level of English. Depending on your goals, we can offer General English, Business English, Academic English or IELTS exam preparation.

We can focus on developing your speaking and/or other skills: reading, writing and listening. We can help you improve your grammar and pronunciation. Our experienced and qualified teachers will help you identify and work on your weaknesses, develop fluency, accuracy and gain confidence in speaking English.

If you would like to study together with a friend whose level of English and needs are similar to yours, you can choose 2:1 tuition.

1:1 (1 student + 1 teacher)

| Tuition | Fee |
|---------------------------|------|
| 1 trial session (90 mins) | £130 |
| 10 hours | £800 |

2:1 (2 students + 1 teacher)

| Tuition | Fee |
|---------------------------|-------|
| 1 trial session (90 mins) | £160 |
| 10 hours | £1000 |

Group bookings

The following information is suitable for Regent's representatives/agents who work with groups, or an English language teacher who wants to bring students to study English in London.

Group bookings are:

- Open or closed
- For groups of 10 or more
- For students aged 16 or over

If you have any questions, or would simply like to chat through your options, please get in touch via email elc@regents.ac.uk





"Thank you for an amazing six months at Regent's. My English was improved because of your great teachers. I enjoyed my school life there so much and will never forget that period."

Shinji Sano, Japan

Apply all year round at regents.ac.uk/elc



ELC closure dates

Good Friday: 15 April 2022

Easter Monday: 18 April 2022

Early May Bank Holiday: 2 May 2022

Spring Bank Holiday: 2 and 3 June 2022

Summer Bank Holiday: 29 August 2022

Christmas 2022: 19 December 2022 – 6 January 2023

Please note that we do not offer any refunds for bank holidays, or other pre-scheduled days when the Centre is closed.



